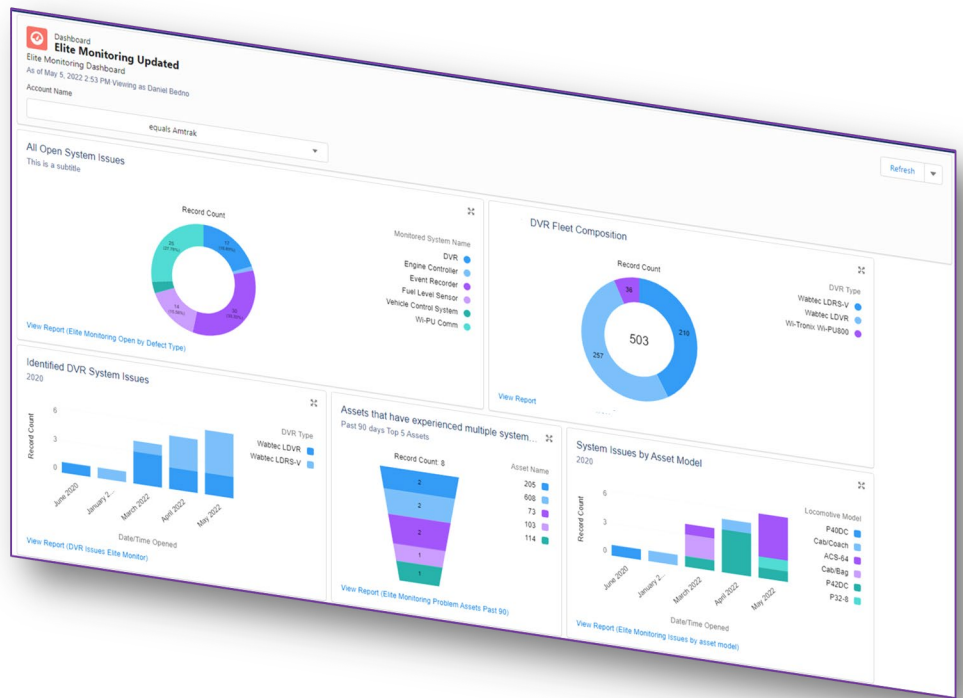




Elite Monitoring

Solution Overview



- Availability of an asset to generate revenue is critical to any rail operation.
- Mechanical personnel must ensure assets are always reliable and at optimal performance.
- Health monitoring is necessary but not sufficient to fully evaluate an asset's performance.
- Our Elite Monitoring solution takes remote asset health monitoring to the next level by combining health with other configurable operating and environmental data.
- Elite Monitoring fully evaluates asset performance and provides appropriate recommendations to subscribed users.

Outcomes

Improve planning



- Understand asset performance before arrival at the shop via email notification and/or integration with work order system
- Streamline work orders by automating initial investigation
- Have target repair material ready when asset arrives.

Faster Repairs



- Improve efficiency of troubleshooting and repair via effective recommendations for each failed supported system
- Immediately address root cause vs. spending time on locating the problem.
- Improve the output of an asset by maximizing asset utilization thru reduced time in shop.

Report Trending



- Ability to view the trend of each system and subsystems to help prioritize repairs and rebuilds.
- Ability to view the failure trends of assets across the fleet

Wi-Tronix.com

©2022, Wi-Tronix, LLC. All rights reserved. Wi-Tronix and the Wi-Tronix logo are the registered trademarks of Wi-Tronix, LLC.